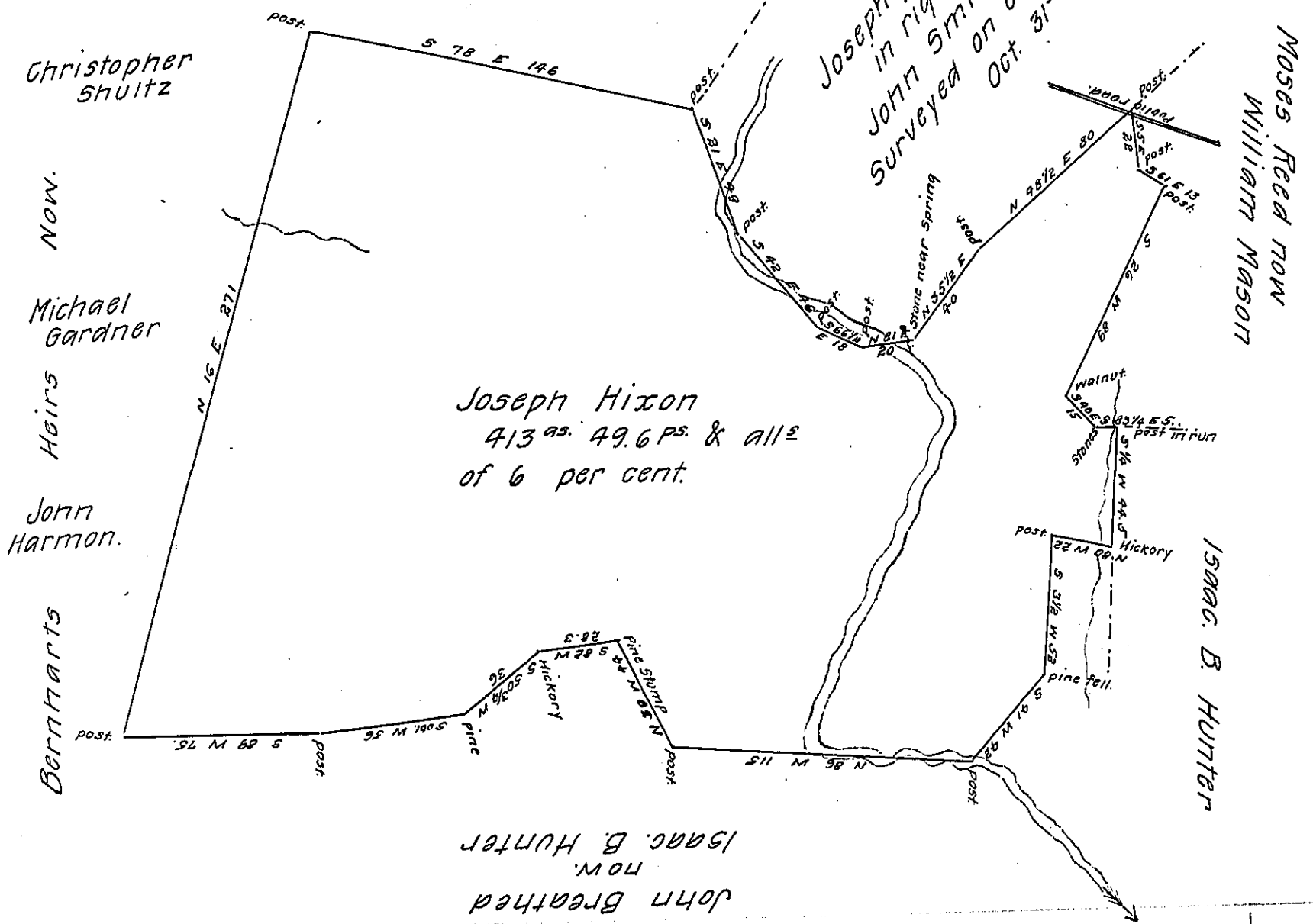


C165' 278
John Mann now
Joshua Mann
in right of
Peter Monfort.

Joseph Hixon
in right of
John Smith
Surveyed on order No. 1764
Oct. 31st. 1766.



A Draft of a tract of land situate on Tomoloway Creek in Bethel Township Fulton County (formerly Bedford County) containing 413 acres 49.6 perches and the usual allowance of 6 per cent for roads &c. Surveyed for Joseph Hixon May 28th A.D. 1863 in pursuance of a warrant granted to the said Joseph Hixon for 400 acres, bearing date the 10th day of February A.D. 1840 including an improvement.

Geo. Holly,
County Surveyor.

To Hon. James P. Barr,
Surveyor General.

IN TESTIMONY that the above is a copy of the original remaining on file in the Department of Internal Affairs of Pennsylvania, made conformably to an Act of Assembly approved the 16th day of February, 1833, I have hereunto set my Hand and caused the Seal of said Department to be affixed at Harrisburg, this first day of August 1907.

Henry Houck
Secretary of Internal Affairs.